

THE OCEAN WITHIN

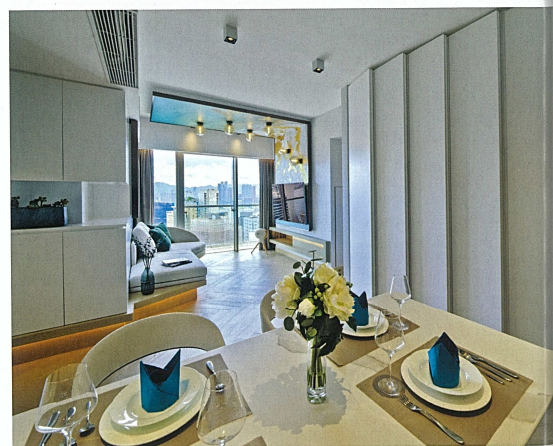
A compact abode becomes impactful with a mural that echoes the sea and inventive use of space

A home should be as expressive as its owners. Exuding a harmonious creative energy, this tailor-made apartment at The Summa in western Mid-levels speaks volumes about the family who reside here. Its soothing character is punctuated by vibrant accents, and a striking artistic statement sets the tone for imaginative living.

Though compact at 1,000 square feet, the apartment is light and bright, with clever design elements and beautiful views of the city skyline instilling a feeling of openness. The designer, Danny Chiu Interior Designs, completely changed the developer's original floorplan, customising the available space to match the taste and individual preferences of his clients.

The result is a cosy home for a couple and their two children who rejoice in each other's company. Its functionality has been optimised to fulfil their requirements for an apartment with a defined personality that meets the specifics of their lifestyle and storage needs. Walls were removed and relocated to create an open-plan living-cum-dining area with an adjacent kitchen and to accommodate three bedrooms plus the maid's room and three bathrooms – a feat of design ingenuity considering its modest measurements.

The décor was redesigned with an emphasis on art, colour and lighting effects. A tasteful blend of hues and textures, the interior palette brings a sense of opulence to a rather small space. Natural materials like pale wood for the floor complement the aesthetic wallpaper and ombré lighting. The focus was to inject the living space with an artistic expression, using a smart combination of both white and exuberant colours and carefully curated ambient lighting.



The highlight of the living area is an impressive oil painting patterned like the ocean that frames the far wall of windows – it spans the length of the ceiling in front of the windows and spreads down one of the adjacent walls, where it serves as the backdrop for a giant TV screen. On the opposite wall, above the sofa constructed on a pedestal, the artwork appears again in a three-panel design. Studded with lamps and paired with the layering of the walls, this extensive canvas lends an out-of-ordinary experience when first stepping into the home.

To contrast with and emphasise the mural, two similar yet varying shades of white decorate the communal space – pale white for the walls of the dining area and a grey-white hue to create a cooler ambience in the living area. A seamless row of custom-made fitted cabinets opposite the dining





table is edged by vertical lighting, further brightening the dining area for enjoyable meals and family time.

The living area opens onto a small balcony where one can step out to get some air and enjoy the glowing lights from the city's major landmarks at night. The dining area also has access to its own balcony, with the option to draw close or open the grey velvet curtains that serve as a regal backdrop to the table.

A narrow hall leads to the more private space of the apartment. At the end is the master suite, while the children's bedroom and the guest room are opposite one another, with separate bathrooms for each situated side by side further along. In a master stroke to boost the size and storage area of the bedrooms from the original floorplan, the family's two children enjoy a larger shared space that also allows for privacy. Vibrant colours and playful elements create an inspiring, cheerful environment for creative young minds to grow happily together.

The reconfiguration enables each child to have their own walk-in closet, their own desk set beside the window and their own sleeping quarters, which is raised above the floor and accessed by separate



Text: Zaira Abbas Photos: Danny Chiu Interior Designs

"A tasteful blend of hues and textures, the interior palette brings a sense of opulence to a rather small space"

sets of stairs. The defining feature here is an arch-shaped installation of bright interwoven fabric that reminds of a tent. Covering the far wall above the window, it not only draws the two halves of the room together but also becomes the dominant element, filling the room with joyful colour and the spirit of adventure.

The master bedroom is, unconventionally, relatively small, but it serves as a functional yet welcoming space for the couple to enjoy some respite from their busy lives. Its wide bay windows offer a

vast view of the Hong Kong cityscape and waterfront. The interior is kept minimal and the palette is more solemn here than elsewhere, though a feature wall exhibiting a similar artwork to that in the living room adds splashes of colour and a restful vibe.

A true reflection of the personality of its dwellers, this characterful abode abounds with vibrant colours and vivid themes amid expanses of white. Its distinctive features and creative design make it not only an inviting living space for the family but also an intriguing showpiece for guests. ■

