

# SPACE ENHANCERS

環觀四周，高聳入雲的摩天大樓已成為本地一大特色。雖然居住環境日漸變得狹窄，但不少單位仍具備樓底高的優勢，補足了平面空間不足的缺點，而設計師 Danny Chiu 於一室採用圓桶型設計，充分利用垂直空間，將各種家居擺設依圓周逐漸向外擴展，塑造出別具新鮮感的間隔。Measuring in at just 400 square feet, transforming this Mid-Levels apartment into a contemporary, elegant home was always going to be a challenge, but Danny Chiu rose to the occasion.

別  
致  
俱  
全





瀏覽設計師更多作品  
[www.todayliving.com](http://www.todayliving.com)



Text by Yoyo Chan & Melinda Earsdon  
Interior design & photo courtesy of Danny Chiu / Danny Chiu Interior Designs Limited



1. 灰、白色牆身設計高貴脫俗，綴以銅條，展現一室優雅格調。|| Designer Danny Chiu has transformed this 400 square foot apartment on Conduit Road into an elegant abode that by far belies its restricted footprint.

2. 地面與圓桶形設計之間留有縫隙，加上滲光燈管，塑造出圓柱懸垂的效果，令整體構造更見輕巧。|| In order to make sure the space felt bright and open, Chiu settled on a pale grey colour scheme that encouraged the natural light to floor throughout the space.

3. 樓梯、儲物架、飯檯及書檯等環繞圓柱中心點而建，打破固有平面間隔。除了可令一室充滿新鮮感，還能增加室內活動空間。|| The lower floor is open plan, introducing a unique flow of energy all the way from the main entrance through to the wine tasting area on the balcony.





3.

年輕的女戶主期望家中能設有錄音設備、戶外品酒區及雅致廚房，同時室內要足以容納二十位客人。設計師 Danny Chiu 於四百呎單位內實現戶主種種願望，便在室內的中央位置建造雙用途圓柱，並將飯檯、儲物空間等環繞圓周及中心點而立，增加地面的活動空間。

#### 細心規劃

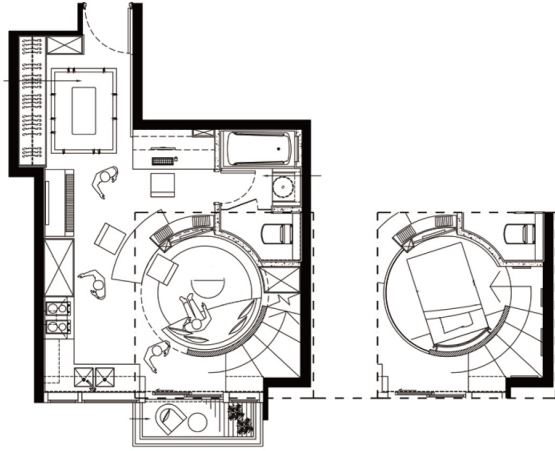
圓柱於一室中央懸下，單位內的三層假天花亦是環繞著圓柱設計而建，做法與地面的工作間、用餐及儲物空間互相呼應。玄關的第一層假天花用以安裝滲光燈槽，其灰色石膏線設計，綴以寶藍色絨布雅座，塑造出高貴典雅的氣派。單位牆身以白色及灰色為主要基調，另外戶主希望家居能呈現出優雅美態，設計師於是在牆身配上銅線，點亮了一室素色空間。地面則採用了橡膠木地板，以人字型樣式鋪設，視覺上塑造出空間延伸的效果。女戶主專修建築，為了令屋內增添更多個人化元素，設計師於書檯上飾以半抽象畫作，隱約呈現樓宇景象，同時用以遮擋電箱，美觀與功能性兼具。而書檯上的第二層假天花內置長型燈管，同時修飾了室內冷氣裝置，更為書檯提供額外的燈光照明，安排恰到好處。設計師於圓柱體外圍劃分出陳列架，予戶主收藏書籍的空間，使該處巧妙地形成了一個開放式書房，而位於書架上的最高

層假天花同樣設有天花燈，打亮了陳列書架及圓柱。圓柱置頂懸下，其底部與地面之間留有縫隙，加上滲光配置，打造出吊牆效果，令圓柱顯得更輕巧別致，而表面闊度不一的銅線令其線條更加突出，讓室內間隔更加明顯。

#### 智能家居

女戶主對烹飪甚是熱愛，設計師便在鋼琴旁邊放置白色 L 型廚櫃，當中備有焗爐，以及一站式儲存廚具的空間，讓女戶主廚食時更加得心應手，貼牆式櫃身由鋼琴一直延伸至露台邊，剛好嵌入角位，使空間顯得更加工整。另外，設計師於露台設置了長型木板，形成了一個小型酒吧，方便女戶主招呼到訪朋友。於露台旁邊的樓梯拾級而上時，內置的燈管會因感應到踏步聲而逐層開啟，體現出現代家居的特點。各梯級位置寬敞，同時可用以作招待客人的雅座，達至一「梯」二用的效果。客廳位於圓柱內的一樓空間，寶藍色梳化呈弧形設計，恰巧能置入圓型內弧，整齊別致，配合中央圓型茶几，呈現圓滑柔和之美。另外，室內電器設有聲控系統，女戶主可輕鬆以口令控制燈光、冷氣和窗簾的開關，方便快捷。主人房同樣順著弧度設置寢具，設計師於圓柱內攏的牆身上劃分出弧形床背牆，其精巧外型與球體床頭燈互相映襯，為主人房帶來簡單唯美的點綴。浴室看來明淨透亮，而古銅條勾劃出空間線條，增加立體感。





#### Data

Location: The Morgan, Conduit Road 干德道敦皓  
Size: 400 sq.ft

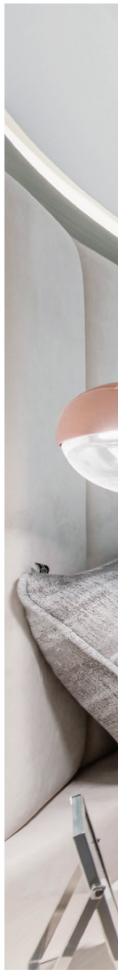
#### Supplier List

Living and dining room: (sofa, Coffee table & dining table and chairs) Custom made by Danny Chiu Interior Designs Limited (Wallpaper) Goodrich Global Limited (lighting) Swarovski **Bedroom:** (bed and cabinets) Custom made by Danny Chiu Interior Designs Limited **Bathroom:** (sanitary appliance) TOTO



1. 中央圓桶內設兩層，一樓客廳置有半圓寶藍色梳化，剛好嵌入內弧，精巧工整；二樓主人房空間鑲有透明玻璃，增強透光透之餘，也保留了開放式空間的特性。|| A cylindrical column that comprises an upper bedroom and a lower living room has been constructed in the heart of the home, surrounded by an elegant staircase.

2. 主人房順著弧度設置寢具，設計師於圓柱內攏的牆身上劃分出弧形床背牆，其精巧外型與球體床頭燈互相映襯，為主人房帶來簡單唯美的點綴。|| Meanwhile upstairs, a smart home system enables the owner to control the lighting, air con and curtains via verbal commands direct from her bedroom.





One of the greatest challenges for many homeowners in Hong Kong, it can be difficult to ensure your apartment embodies your personal style and meets the needs of your unique lifestyle, especially if you are faced with limited available floorspace. However, design lead Danny Chiu from Danny Chiu Interior Designs Limited has managed to do just that with this 400 square foot apartment on Conduit Road in Mid-Levels. The end result is an elegant abode that by far belies its restricted footprint.

In order to make sure the space felt bright and open, Chiu settled on a pale grey colour scheme that encouraged the natural light to floor throughout the space, creating the impression of a larger floor plan. The entire bottom floor has been left open

plan, introducing a unique flow of energy all the way from the main entrance through the completely open study, all the way out to the wine tasting area on the balcony.

Aiming to satisfy the owner's desire to make the interior look more interesting, a cylindrical column that comprises an upper bedroom and a lower living room has been constructed in the heart of the home, surrounded by an elegant staircase. A smart home system enables the owner to control the lighting, air con and curtains via verbal commands direct from her bedroom. Meanwhile, the designer also hoped the spiral staircase could double up as a funky seating area where the owner can entertain guests, on occasion.



1. 室內電器設有聲控系統，女戶主可站於二樓主人房，輕鬆以口令控制燈光、冷氣和窗簾的開關，方便快捷。  
|| Clearly visible from above, the lower floor has been decorated with a Chevron-patterned material that is made from Japanese oak, visually extending the space.
2. 女戶主對烹飪深感興趣，設計師在鋼琴旁邊放置白色 L 型廚櫃，當中備有焗爐，以及一站式儲存廚具的空間，讓女戶主廚食時更加得心應手。|| Adding a hint of style, the living and dining areas house a Swarovski pendant lamp as well as a sofa, coffee table, dining table and chairs from Danny Chiu Interior Designs Limited.
3. 浴室設計明淨透亮，而古銅條勾劃出空間線條，增加空間的立體感。|| And finally, the bathroom has been decorated with sumptuous shades of pale marble and white tiles, highlighted by a simple copper bar. 🔪

