

Jun 2017 | NO.359

# 今日家居

INNOVATION IN LIFE STYLE

## TODAY'S LIVING



Get a **FREE** edition of 2017 HONG KONG INTERIOR DESIGNERS during "Thanksgiving Months"

Please refer to P.30 for redemption method.

Cover Story 精緻空間  
Hotel Style

Special Supplement  
戶外新氣象  
Great Outdoors

Living Plus  
中世紀風情 — 捷克克魯姆洛夫



HK \$35  
9 771018 578003  
A Strategic Interior Monthly



客廳裝設了十二色LED燈，令一室滿溢時尚現代感。|| With three children living in the apartment, the dining room needed to be well lit for when the kids need to do their homework, so the designer created definition for the space.



Located on the western side of the New Territories, Tsuen Wan's City Point residential development is a sprawling estate that plays home to in excess of 1,700 units, including this 714 square foot apartment. However, this particular apartment needed to house seven family members, which was a challenge given the limited floor space. The owners were keen to embody an atmospheric and moody design scheme in their home, which is also occupied by their three kids and two live-in domestic

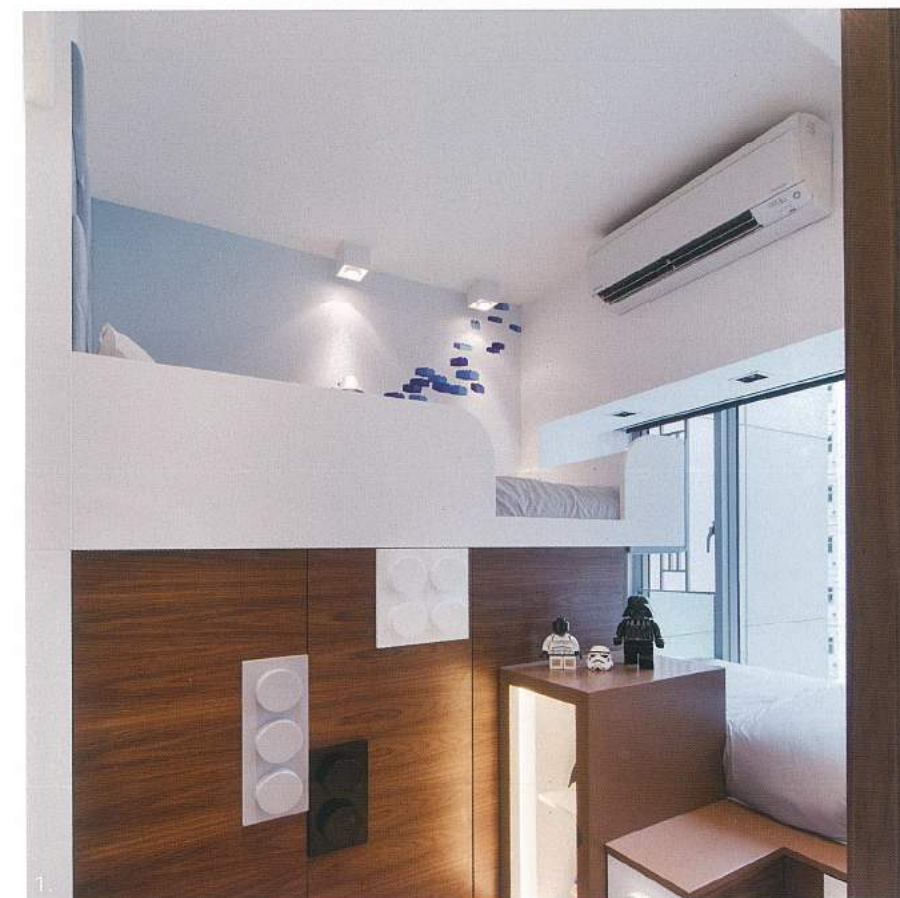
helpers. As such, designer Danny Chiu of Danny Chiu Interior Designs Limited had his work cut out for him. When examining the original layout, Chiu set about making several structural changes, most notably expanding the master en suite bedroom in order to accommodate a five-foot bed, bedside cabinets and a large wardrobe, and part of the daughter's bedroom was sectioned off to form a corridor, providing additional storage space. Also, the storeroom located in the centre

of the lounge appeared awkward, so the designer extended the length of the space to form the helpers' room and shoe cabinet, decorating the door with a painting in order to discreetly hide the space. This painting actually doubles as a sliding door, providing one of two entrances into the hidden room. The owners were very keen to ensure their home felt more like a hotel than a flat, so the design team selected darker colour tones in the lounge where the couple enjoy their private time. However,

they also wanted the dining room to be well lit for when the kids need to do their homework, so the designer cleverly created a sense of definition between each space, meeting the needs of all occupants. The results are edgy and sophisticated, making this small property feel much accommodating than it is in reality.

1. 兩兄弟的房間以Lego為主題，牆身及衣櫃上均可見其蹤影。|| Because the sons share a room, they needed two staircases to reach the beds as well as a communal area for bedtime stories.

2. 兩張睡床均有獨立梯級，陳設櫃可供兄弟倆展示心愛的玩具。|| Featuring walnut wood furnishings and embodying a Lego theme, the space is playful despite being small, and takes full of advantage of the entire floor plan.







由於床後的窗戶偏向一邊，設計師便以可揭式面板及捲簾遮蓋，保持美觀之餘同時無礙室內對流通風。|| Chiu made several structural changes, most notably expanding the master en suite bedroom in order to accommodate a five-foot bed, bedside cabinets and a large wardrobe.



將梯子收起、放下梯子，部分寢區空間便可變作工作間。|| Flexible in design, the ladder in the daughter's room can easily be removed to provide more space, while the brushed lacquer and black glass writing desk is easily extended.

1. 主人房內的C字型電視架與廳區相同，「C」為戶主姓氏的開首英文字母，設計十分個人化。|| The decorations in master bedroom are quite similar to the living room, both featuring a 'C' pattern TV rack, signifying the first alphabet of the owner's surname.

2. 為呼應窗外的城市景觀，設計師於套房內以馬賽克拼貼高樓圖樣，天花的灰鏡既可起反射作用，亦可增強空間感。|| The master bathroom houses a grey mirror on the ceiling, which enhances the height of the space.

3. 主廁的牆身綴以板石紋瓷磚，煥發自然美感。|| Meanwhile, the walls have been decorated with sophisticated charcoal grey stone pattern tiles.

4. 客廳設有灰玻璃浴屏，淋浴間的戶外木地材予人輕鬆寫意的感覺。|| The guest bathroom also features the same charcoal colour palette, however the original bathtub has been replaced with a shower console.







## 香

港地少人多，因而空間運用之於本地的室內設計師而言從來都是一項需巧花心思的任務，但本案設計師所面對的難題尤其艱鉅：居室的窗台佔廳區約四份一位置，客廳中央又佇立一間雜物房，再加上要令每位成員在斗室內住得舒適，非常考驗設計師的功力。

### 妙用空間

要解決此「土地問題」，設計師首先更改居室原有的間隔，加長儲物室以建造鞋櫃及工人房。工人房設有雙邊入口設計，讓兩位家庭傭工可擁有個人空間，一邊的入口更綴以趟畫設計，減低儲物室位於客廳的突兀感。設計師同時加高

寬厚的窗台，包上胡桃木，構建地櫃及揭板儲物櫃，並將電視及電視架置於窗台，在視覺上拉闊廳區。天花亦相應地裹上胡桃木，斜面設計增添視覺趣味。天花配備十二色 LED 燈，與廳區沉穩的色調一同營造摩登酒店風格。玫瑰金色的 Kartell 椅子由設計師從外國訂購，瑰麗的色調令一室綻放獨特的光彩。

### 美觀與實用兼備

為增添走廊的儲物空間，設計師將女兒房的部分空間劃出，而房間的入口則改為向走廊開啟，增添房內的活動空間。女兒房間的面積雖然不大，但設計師善用窗台的空間建造可延伸的書桌。只要移開爬梯，放好椅子，寢區的部分空間

便可變為工作間。兩兄弟的睡房以 Lego 為主題，衣櫃及牆身上均處處可見其蹤影。兩張睡床分別有獨立樓梯供二人上落，睡床之間更設有說故事區，讓戶主與兄弟倆共享天倫之樂。

主人睡房的陳設與廳區頗為相近，睡床置於中央，惟床後的窗戶偏向一邊，形成不平衡的觀感。為了保持對流通風，設計師並沒有封閉窗戶，反而以可揭式面板及捲簾將之遮蓋，平衡功能與美觀。以高樓大廈景觀為主題的數碼印刷藝術品散見於居室中，而設計師亦以馬賽克妝點套廁的一面牆身、浴缸表面及地面，垂直鋪砌成大樓圖樣，與全屋的裝飾主題一致之餘，亦與屋外的城市景觀互相呼應。

1. 設計師加高了窗台以構建地櫃及可揭式餐櫃，並將透光雲石電視架置於窗台，活用客廳每吋空間。|| Despite its diminutive size, the owners of this City Point apartment were keen to embody an atmospheric and moody design scheme in their home, which houses seven people.

2. 設計師以畫作修飾其中一邊的工人房入口，減低原儲物房處於客廳的突兀感。|| The owners were also keen to ensure their home felt more like a hotel than a flat, so the design team selected darker, more sophisticated colour tones in the lounge.

3. 工人房內分為上下兩層，各有獨立入口，讓兩位幫傭有自己的歇息空間。|| Making use of an awkward storeroom in the middle of the lounge, the designer extended this space to form the helpers' room decorating the door with a painting.





# project review

## Data

Location: City Point 環宇海灣

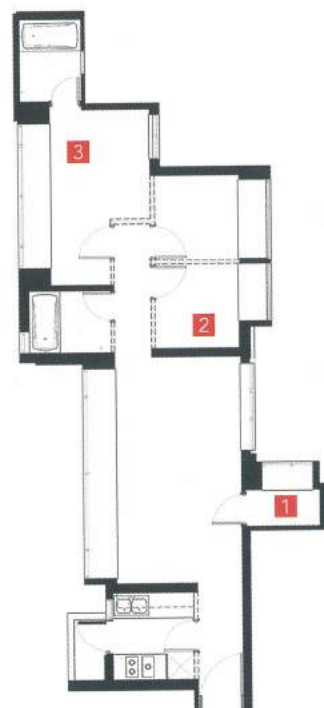
Size: 714 sq. ft.

## Supplier List

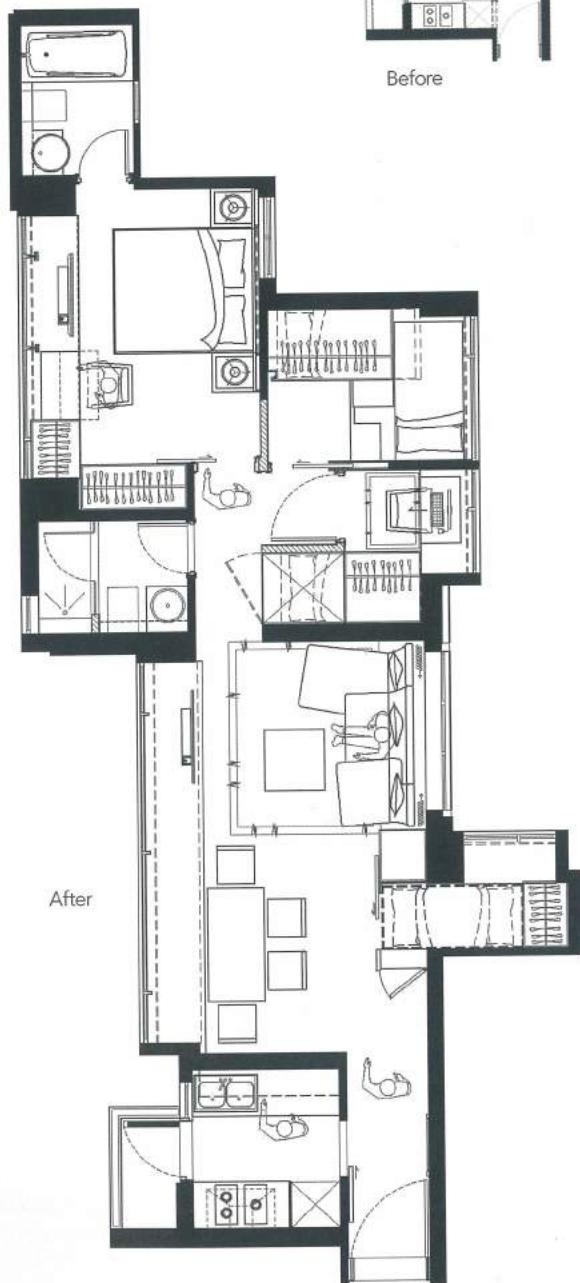
Living and Dining room: (sofa) Ligne Roset / (coffee table) BoConcept / (dining table) Adtura Ficus Ltd / (dining chairs) aluminium, Kartell / (wallpaper) Tat Ming Wallpaper Company Limited / (lighting) Artemide **Bedroom:** (wallpaper) Tat Ming Wallpaper Company Limited / (lighting) e Lighting **Children's bedroom:** (bed and cabinet) custom-made by Danny Chiu Interior Designs Limited / (wallpaper) Tat Ming Wallpaper Company Limited / (lighting) Artemide **Bathroom:** (toilet) TOTO / (faucet) Galaxy Bathroom Collection

## Project Review

1. 加長原有間隔的儲物室，以建造鞋櫃及工人房。 || Extended the storeroom to build the helpers' room and shoe cabinet.
2. 將女兒房間的部分空間納入走廊，增添走廊的儲物空間。 || Part of the space in daughter's room is sectioned off to the corridor to provide storage space.
3. 設計師擴大了主人房的空間，以擺放睡床、衣櫃及床頭櫃。 || Expanded the master en suite bedroom in order to place the five-foot bed, bedside cabinets and a wardrobe. 今



Before



After