

今日家居[®]

INNOVATION IN LIFE - STYLE

TODAY'S LIVING

300

HK\$35 七月JUL 2012

A BILINGUAL INTERIORS MONTHLY

今日家居[®]
TODAY'S LIVING
Anniversary
SINCE 1987 25

Cover Story

回歸自然

Pick of the Bunch

Special Supplement

全方位家居佈置專輯

The Home Decorating Handbook

Living Plus

慢遊芬蘭

Designer's Talk



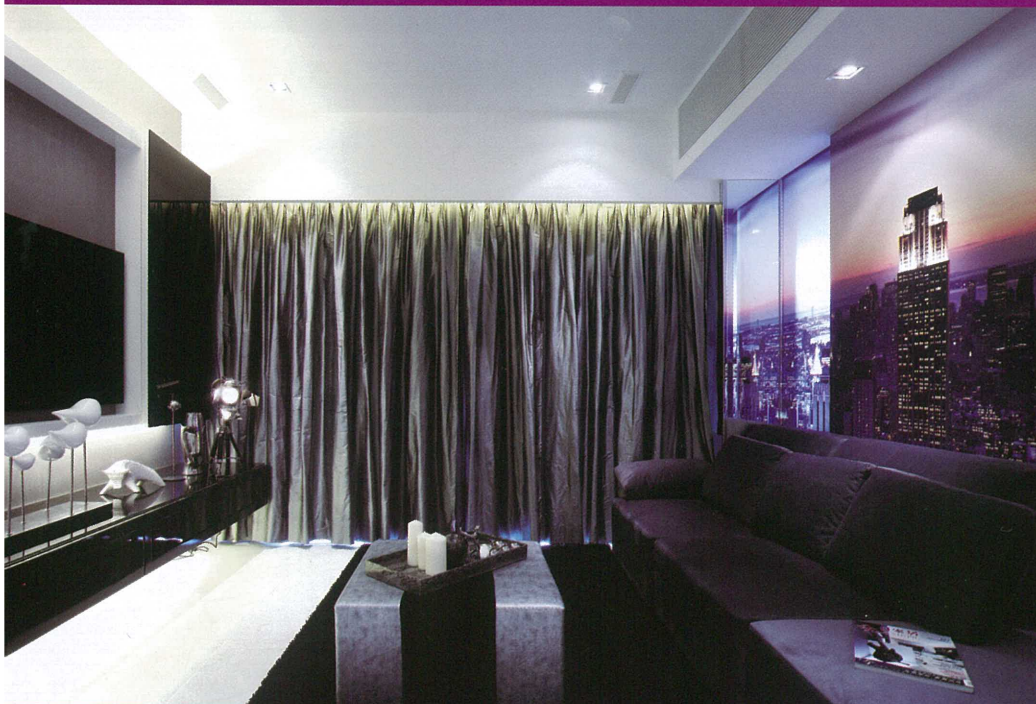
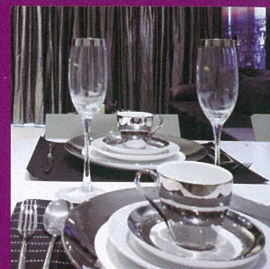
9 771018 578003



樂活都會中 Clever Spaces

設計師大膽重塑單位間隔，配合簡約筆觸與都會主題，為屋主設計出玩味十足的居室，展現優皮的生活態度。

Nifty space-saving tricks and a cool urban design make this home a joy for the senses.



獨居的屋主熱情而好客，常會招待朋友到居室共聚，因此設計師大膽向屋主提議拆掉單位除主力牆外的所有牆身，並以設計靈活的新間隔取而代之，加上盈溢都會氛圍的裝潢，為屋主設計出無拘無束的玩樂空間。

簡約黑白 都會氛圍

甫進居室，只見兩廳以黑、白、灰色調妝點，天花、傢具等全用上簡潔的款式，使一室設計顯得簡約時尚。細看之下，設計師於廳區活用了色彩與質感的變化，例如以深灰色暗紋牆紙對比白櫃子的光潔飾面，或以觸感柔軟的黑地氈映襯明亮的白色地磚等，為兩廳設計添上雅趣。

設計師於客廳盡用色調深沉的傢具，不只為一室注入時尚的型格，更突出了沙發後的曼克頓主題牆；主題牆由兩幅玻璃與一面牆身組成，卻以一整幅曼克頓夜景牆貼裝飾，於燈光下展現不同層次的觀感，令屋主擁有私人的都會夜景。與客廳相比，飯廳的裝潢更為簡潔。其餐檯椅組合由設計師為屋主特意選配，看似平平無奇的设计卻能分別摺合，並收進同為度身訂造的入牆式儲物櫃，騰出空間擺放屋主的足球檯，令飯廳搖身一變為與客同樂的空間。



重塑間隔 提升格調

在拆掉單位原有的隔牆後，設計師重新設計居室的走廊，並以多道可趟摺的木門和木飾牆，區間居室的書房、客房、客廁和主人房。觀感暖和的木飾不單中和了簡約風格的冷感，更明確區分了室內的待客與私密空間，設計一舉兩得。書房與客房佈置雖同以白色為基調，整體觀感卻和而不同：前者以一張黑色的書檯營造鮮明對比，並設靈活的隔牆，方便屋主按需要融合廳房空間；後者則以一木地台鋪墊，加上一張摺合式睡床，方便朋友在此聚會或留宿。

主人房位處走廊盡頭，室內雖與廳區同樣以黑、白、灰色調妝點，其床頭背牆卻捫上質感豐盈的布飾，為一室注入豪華、舒適的氣氛。另一方面，設計師改以通透玻璃與白色雲石區間主人房的浴室，營造更突出的空間感；浴室內除了可見鮮明的黑白對比外，亦有一幅曼克頓剪影畫，與居室設計相互呼應之餘，亦提升了一室的格調。



2



3

1/ 客廳以色調深沉的傢具對比透亮的雲石和玻璃，時尚之餘亦予人點點神秘感。

The television cabinet setup provides storage and allows the owner to neatly conceal the television as well.

2&3/ 曼克頓夜景特色牆由兩幅玻璃與一面牆身組成，於燈光下展現富層次的觀感；走廊則以多面木飾牆點綴，既區分了室內的待客與私人空間，亦為一室的簡約風格添上暖意。

Highlights of the lounge include the sliding doors of the minimalist television cabinet setup and the sliding glass partitions with digital prints of Manhattan which can be pulled away to reveal a study area behind the sofa.



1



2



3

Located in one of the tallest residential buildings in Hong Kong and with an exclusive address just next to ICC, the owner of this home wanted their interior to stand out and so the interior redecorating services of Danny Chiu from Danny Chiu Interior Designs were enlisted. Now the 1,300 square-foot home stands out with a trendy Manhattan loft design scheme with ingenious features that preserve space throughout.

In the renovation most of the original walls were removed and a new spatial arrangement was set up. This is most apparent in the living room where clean white tones are complemented by grey wallpaper, dashes of black and a sleek selection of materials including mirror and tinted glass. While there is no foyer, a small lowered segment of ceiling hangs over the entrance and in from here some mirror doors conceal storage space. On the other side of the wall a concealed feature exists as

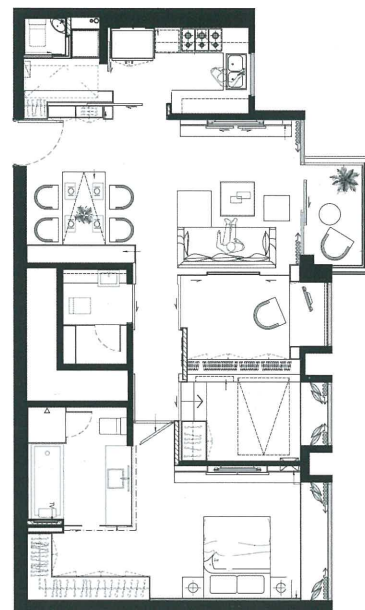
well, with a foldable dining table and foldable Alessi dining chairs able to be stored away in the full-height white cabinet to make room for the owner's foosball table. While the dining area features sleek whites, the lounge area is a haven of grays and blacks, with highlights here including the sliding doors of the minimalist television cabinet setup and the sliding glass partitions with digital prints of Manhattan which can be pulled away to reveal a study area behind the sofa.

1-3/ 設計師特意為屋主度身訂造入牆式儲物櫃與摺合式餐檯，並配以輕巧的摺椅，令屋主可隨時把餐檯椅整齊地收好，以騰出空間擺放足球檯，把飯廳搖身一變為玩樂空間。

The foldable dining table and foldable Alessi dining chairs are able to be stored away in the full-height white cabinet to make room for the owner's foosball table.

4/ 廚房經設計師重新裝修，以亮麗的黑色廚櫃配合時尚的黑色爐具，設計既美觀又實用。

The kitchen was refurnished with slick black-themed Siemens appliances and cabinets.



Information

Location: The Arch (凱旋門)

Size: 1,300 sq. ft.

Suppliers

Living & Dining Area

Dining Chairs: Alessi

Football table: Lane Crawford

TV: Sony

Kitchen

Electronic appliances: Siemens

Master Bathroom

Bathtub: Jacuzzi

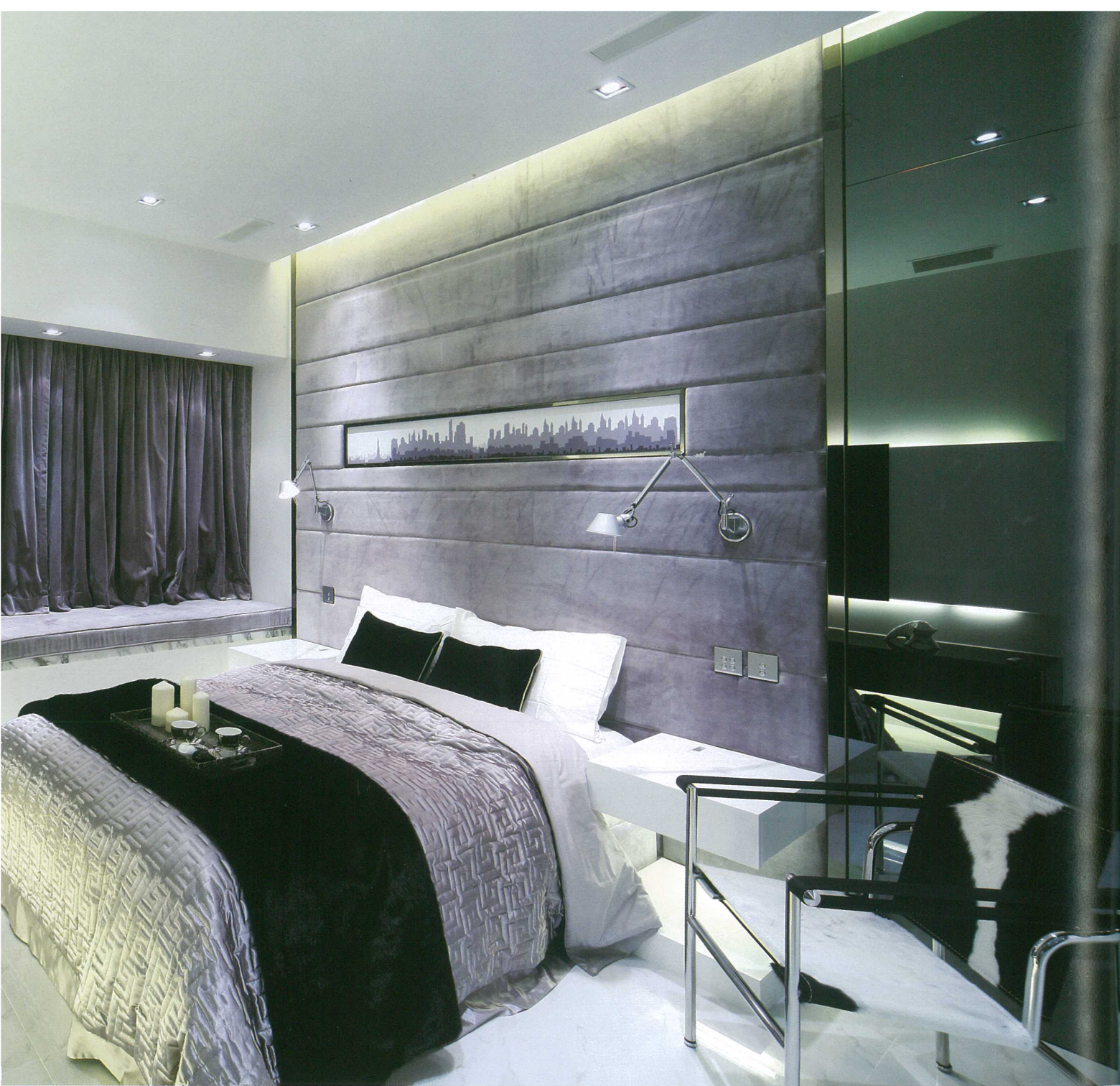
Sanitary ware: Axor, Duravit

Guest Bathroom

Sanitary ware: Axor, Duravit

4





Like the lounge this study features black and white contrasts, and other key features include the desk built into the windowsill and the extensive storage. Off from the living room behind a tinted-glass sliding door the kitchen of the home, and this space was refurnished with slick black-themed Siemens appliances and cabinets.

Down the corridor to the informal areas of the home several large wood panels were installed to inject a touch of warmth and differentiate the private areas from the living areas. The warmth continues into the multi-functional guestroom where a wooden platform brings a layering effect to the room, provides plenty of storage and also acts as a platform for the foldable bed concealed in the wall. When not used, the wooden platform also serves as a space for entertaining guests with

the windowsill area modified into a mini lounge. A windowsill lounge also appears in the master bedroom where a plush sumptuousness takes over. Like the living room, this space features a black and white television cabinet and plenty of clean whites and offsetting blacks and gray, but the difference is in the materials, with plush carpeting and a soft padded headboard appearing alongside a mock cow-skin coated chair. Like a hotel room, there is also an en-suite bathroom which shares the space of the bedroom via the glass partitions and inside here there is a large bathtub, some high-quality marble and a Manhattan skyline motif on the wall. The guest bathroom is also slick and appealing, but this room is very different, with the room featuring shimmering black tiles and a shower and sauna fixture. 今

1&2/主人房與廳區同以黑、白、灰色調妝點，然而設計師在此用上質感較豐盈的用料，例如床頭的捫布飾牆，為一室營造出豪華舒適的氛圍。

Like the living room, the master bedroom features a black and white television cabinet and plenty of clean whites and offsetting blacks and gray, but the difference is in the materials, with plush carpeting and a soft padded headboard appearing alongside a mock cow-skin coated chair.

3/主人房浴室以鮮明的黑白對比營造出時代感。

The en-suite bathroom shares the space of the bedroom via the glass partitions.

4&5/客房的睡床可完全收進白色飾櫃之中，使一室頓時顯得更寬敞，方便朋友在此聚會。

This is how the guestroom looks with the relaxing/entertainment room setup.

4

5

